

## 8 CHANNEL DIGITAL RESISTIVITY METER

### IoT Compatible Model

# McOHM Profiler-8i



Scanner 32



McOHM Profiler-8i

#### <Abstract>

McOHM Profiler-8i is the multi-channel digital resistivity meter.

By combining McOHM Profiler-8i and Scanner 32 (separately sold with the main unit) which has a switching function of electrode, you can conduct an efficient two-dimensional resistivity exploration.

McOHM Profiler-8i is included in 8-component receiver composed of an A / D converter of high-resolution 24-bit sigma-delta type and the latest technology of circuit, energizing circuit (maximum 400 V "800 Vp-p" · 200 mA) and controller based on tablet PC etc.

In addition, this equipment is OYO's first model of resistivity exploration equipment compliant to IoT, and complies with the analysis services in conjunction with the cloud system in the future.

#### <Features>

- Well interface such as 10.1 inch high-brightness color LCD with high visibility, USB port as standard equipment and touch panel in a tablet PC based controller.
- 8-channel simultaneous measurement in a short time at site.
- Expandable up to 192 electrodes with scanner 32.
- Available for full-automatic measurement with the control program and automatic timing measurement by the internal clock.
- Effective for plotting function of decay curve for pole-pole array to control the quality of data at site.
- Able to store the measured data in an internal hard disk in controlling tablet.
- Cost effective, downsized system with light weight.

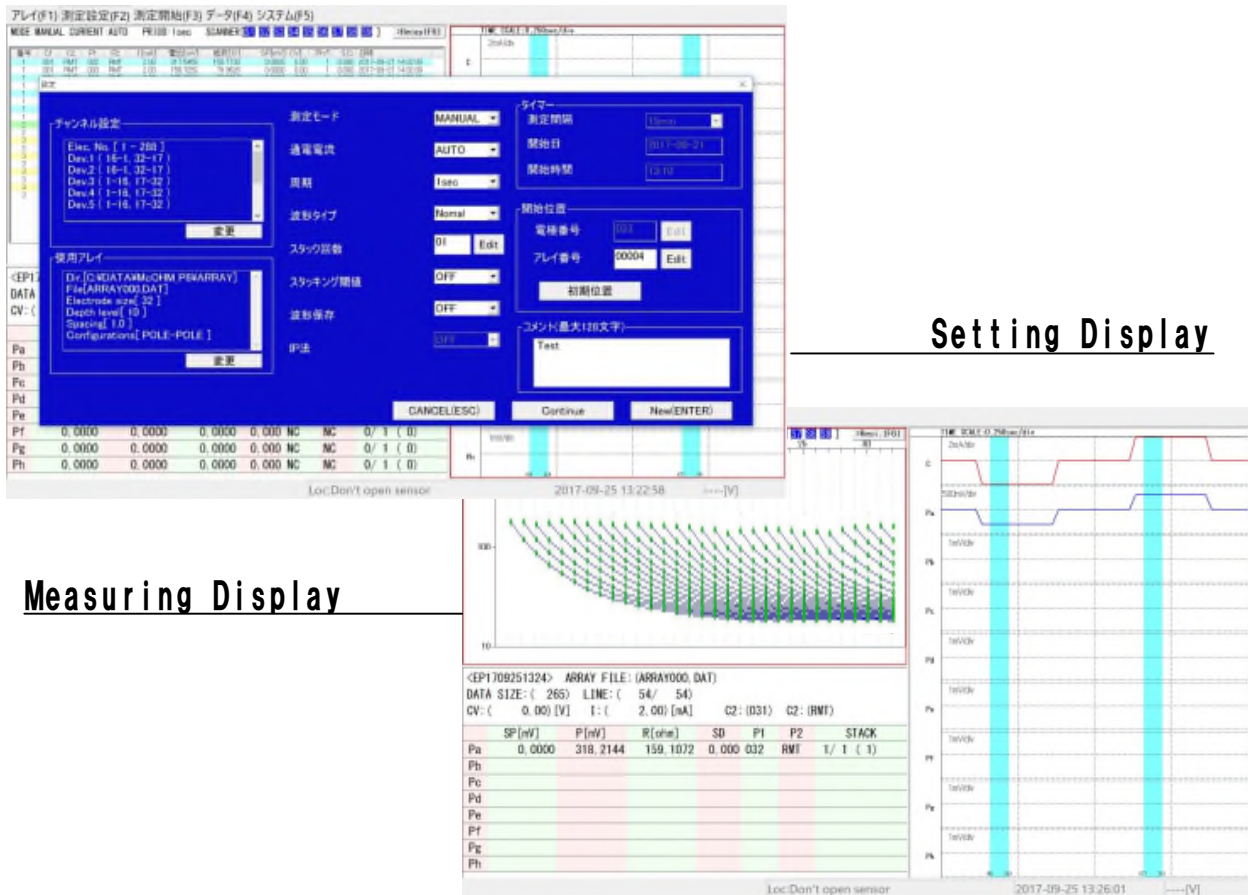
## < Specification >

### System

CPU	: Intel Core i5 2.4 GHz
OS	: Windows 10 Pro 64 bit
System memory	: 4 GB
Data format	: CSV format
Display	: 10.1 inch touch panel with IPS liquid crystal display (1920 x 1200 pixels)
Internal memory	: SSD 128 GB
Interface	: USB 3.0 * 1 port, USB 2.0 * 3 ports
Power supply	: DC 12.0 V
Operating temperature	: -10~50 °C (non-condensing)
Dimension	: 429 mm (W) x 557 mm (D) x 219 mm (H)

### Measuring unit

Electric current supply system	: Constant current
Output voltage	: Maximum 400 V (800 VP-P)
Output current	: AUTO, 1, 2, 5, 10, 20, 50, 100 and 200 mA
Channel	: 8 ch (AD channel isolated type, 24 bit)



Setting Display

Measuring Display

Please note specifications are subject to change without notice for the improvement.



JQA-2772

- Instruments Business Headquarters  
43 Miyukigaoka, Tsukuba, Ibaraki, 305-0841 Japan  
Phone: +81-(0)298-51-5078, Fax: +81-(0)298-51-7290  
E-mail: prosight@oyonet.oyo.co.jp

- Sigmetric, S.A. de C.V.  
Erasmu Castellanos Quinto 444,  
Colonia Educación, Ciudad de México, C.P. 04400  
Teléfono: 55.5658.2997 & 55.5554.9657

■ Your representative

